

Woodura Planks 3.0

LARVIK 3.0 XXL



Type of wood
Oak



Grading
Select



Surface finishing
Brushed lacquer



Staining
Powder White

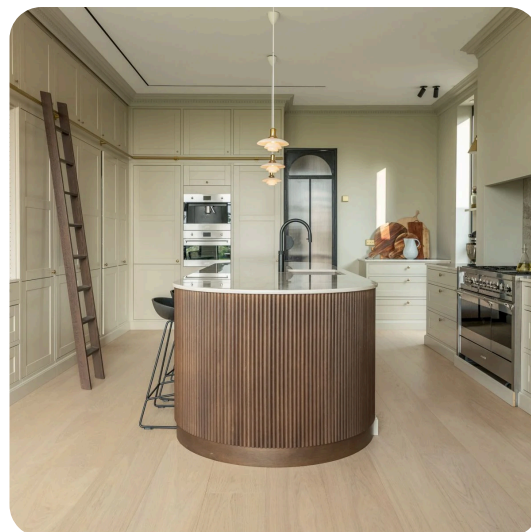


Pattern
Plank



Water resistance
High

Larvik is a contemporary hardened wood floor in a brushed lacquer. The brilliant Powder White shade has been paired with the Select grading, which is clean-looking and harmonious. Made from FSC-certified European oak, the brushed lacquer surface provides a natural wood feel – similar to oiled floors – but the lacquer makes the floors easier to clean and maintain. We recommend brushed lacquered surfaces in all areas of the home.



Specification

GENERAL

Type of floor	Hardened wood
Type of wood	Oak
Grading	Select
Surface finishing	Brushed lacquer
Staining	Powder White
Light/dark	Light
Pattern	Plank
Locking system	Välinge 5G® Dry™
Core	HDF
Microbevel	4 sided

DIMENSIONS

Format	XXL
Width	271 mm
Length	2378 mm
Thickness	11 mm
Thickness of wear layer	0,6 mm

PACKAGE

Quantity in box	3 pcs
m ² / box	1,93
m ² per pallet	93 m²
Weight per m ²	11 kg
Weight per box	22 kg

CLASSIFICATION AND SAFETY

Supports Underfloor Heating	Yes
Water resistance	High
Fire Resistance (EN 13501)	Cfl-s1
Thermal conductivity (EN 12664)	0,16 W/(m*K)
Thermal resistance (EN 12667)	0.07 m²K/W
Formaldehyde emission (EN 717-1)	E1<=0.124 mg/m3
Brinell hardness (EN 1534)	8 HB (average value)
Impact resistance (EN 14354)	EC3
Thickness swelling (EN 14354)	<10% (5% typical)
Wear resistance (EN 14354)	> 1000 cycles
FSC	FSC Mix (FSC-C140725)
SundaHus	Evaluated by SundaHus
Svanen	Yes (3029 0021)
Greenguard Gold	Greenguard Gold Certified
CE Marked	Yes
Limited warranty (public environment)	10 years
Limited warranty (home environment)	Limited Lifetime Warranty
Level of use domestic (EN ISO 10874)	Class Moderate residential (Class 22)



woodura®

Bjelin bjelin.com uk-sales@bjelin.com

Copyright 2025 Bjelin Sweden AB. Weights and dimensions may have minor variations depending on external circumstances. Bjelin reserves the right to deviate from the weight and dimensions in this technical data sheet. Technologies mentioned may be subject to patent protection and invented by Välinge Innovation AB (www.valinge.se/patents). Use of trademarks herein owned by Bjelin Sweden AB or Välinge Innovation AB is under license.



For installation and caring instructions, and further product information, scan the QR code or visit bjelin.com.